



Cricklewood Grove

5350 Summit Bridge Rd.
Middletown, DE 19709

Retail & Office Space FOR LEASE

Property Overview

Cricklewood Grove Center with its superior architectural design offers competitively priced, high quality retail and office (general and/or medical) suites in a suburban setting with ample parking. The center has very good tenant mix within city limits of the Town of Middletown. Strategically located on Route 71, within minutes to Route 299/301. Within close proximity to Route 1, Townsend, Odessa, & Smyrna.

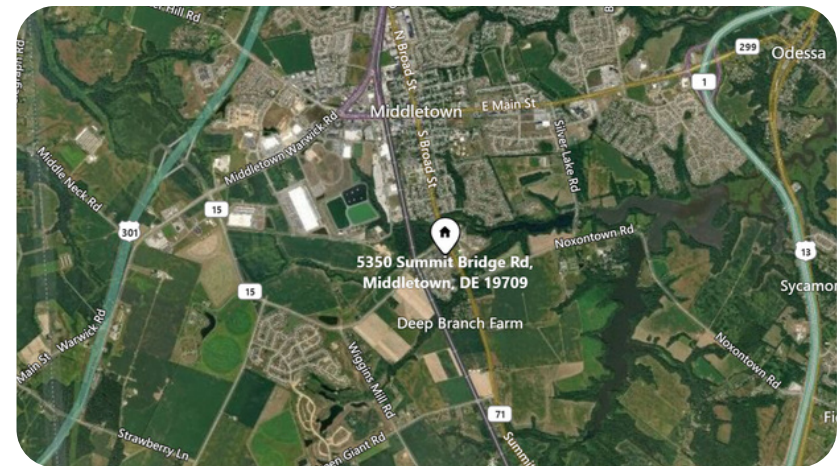
First Floor Availabilities

Unit 11 consisting of approximately 2,200 square feet.

Please contact the listing agent for pricing and additional information.

Second Floor Availabilities

Second floor, elevator served, total of +/-5,050 square feet are available for general office, medical office, or any appropriate usage for this space. There are a total of 3 units (unit 203 is approximately 1,685 sf), (unit 205 is approximately 1,700 sf), and (unit 207 is approximately 1,665 sf). All contiguous and can be subdivided. The price is for a "as is" gray shell. Owners will consider finishing the units for a well qualified tenant and must make business sense for all parties involved. Asking \$12.50/sf "As Is".



For More Information Please Contact:

Mitri Habash, CCIM, MICP
302-218-3025
Habash@HabashCommercial.com

www.HabashCommercial.com

Sales | Leasing | Property Management | Business Brokerage

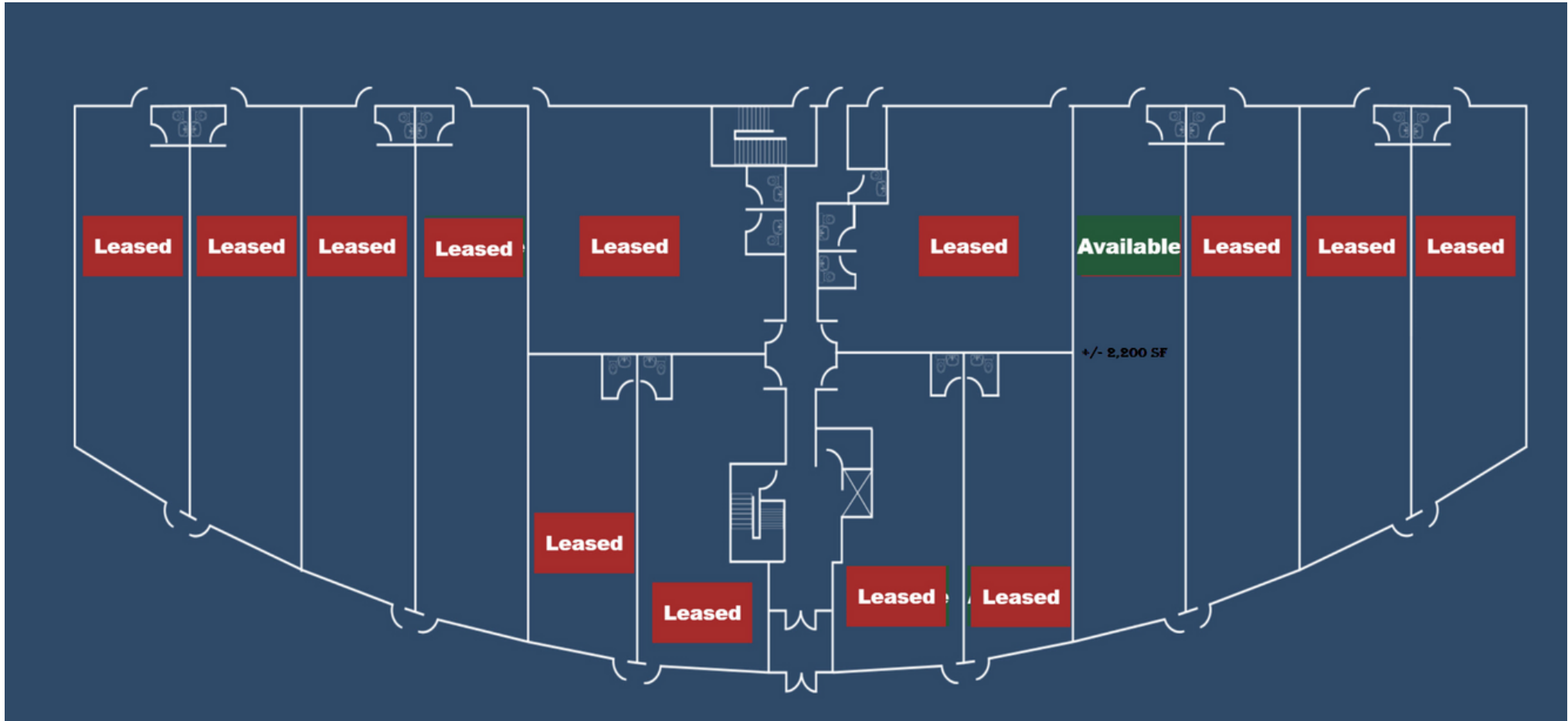
Habash Commercial Realty

205 Philadelphia Pike
Wilmington, DE 19809
(302) 544-9144

Cricklewood Grove

5350 Summit Bridge Rd.
Middletown, DE 19709

1st Floor Layout



For More Information Please Contact:

Mitri Habash, CCIM, MICP
302-218-3025
Habash@HabashCommercial.com

www.HabashCommercial.com

Sales | Leasing | Property Management | Business Brokerage

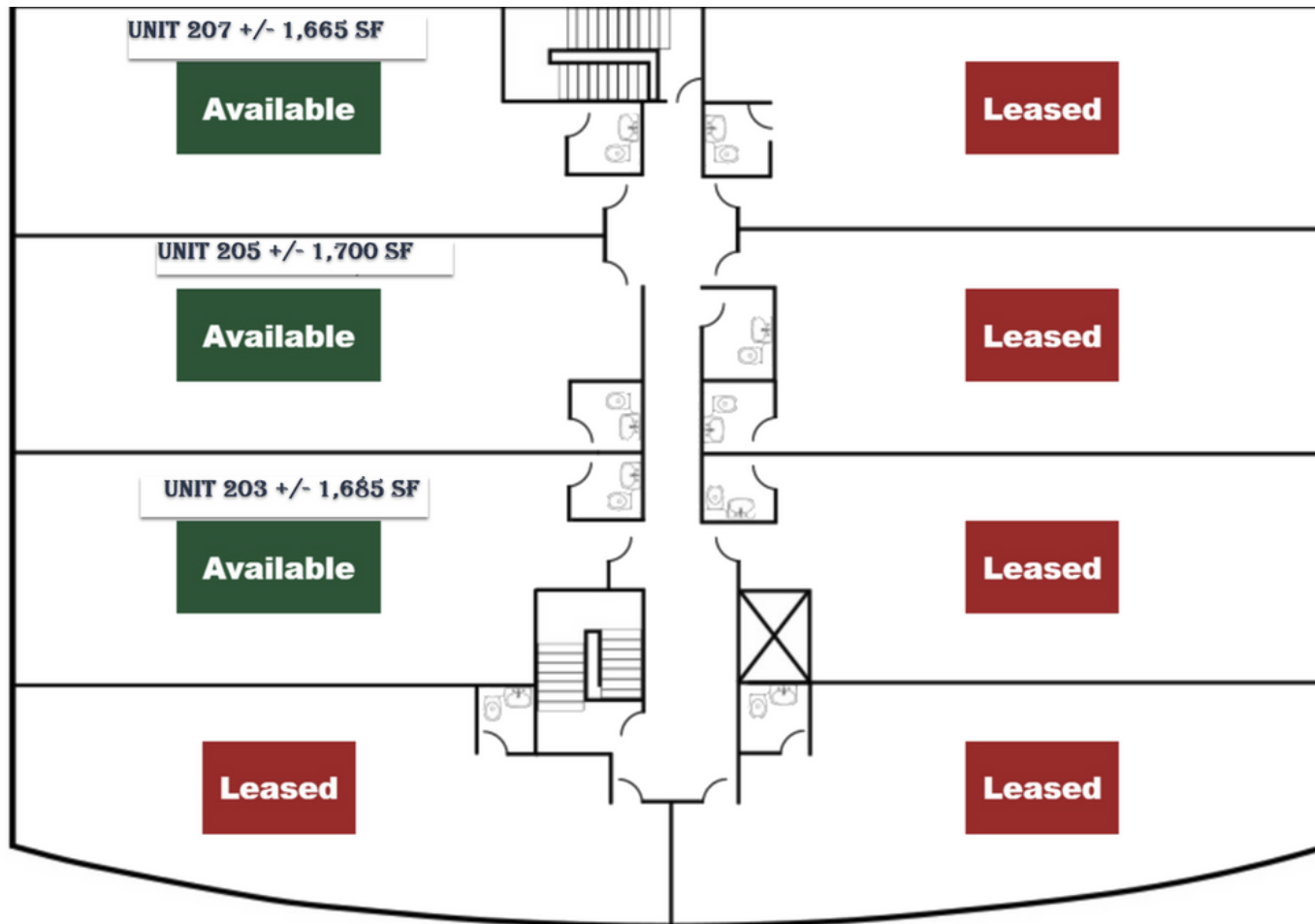
Habash Commercial Realty

205 Philadelphia Pike
Wilmington, DE 19809
(302) 544-9144

Cricklewood Grove

5350 Summit Bridge Rd.
Middletown, DE 19709

2nd Floor Layout



For More Information Please Contact:

Mitri Habash, CCIM, MICP
302-218-3025
Habash@HabashCommercial.com

www.HabashCommercial.com

Sales | Leasing | Property Management | Business Brokerage

Habash Commercial Realty

205 Philadelphia Pike
Wilmington, DE 19809
(302)544-9144